

Table of Contents	
01	Title
02	Block Diagram
03	POWER
04	NFCC Interface
05	NFC Antenna
06	IMX8

Revisions			
Rev	Description	Date	Approved
X1	Initial Design	13 DEC 2022	Jurgen Schroder
A	Release	18 JAN 2023	Jurgen Schroder
B	Schematic Update 1) change J45 and J46 to solder jumper R2 2) change S31 and S32 to solder jumper R3	6 APR 2023	Jurgen Schroder
C	Schematic Update 1) Change R83 interface to IMX8 interface 2) Change R2 default setting to 3.3V 3) Change LED dim resistors 4) Change J27 pin 4, 5 connection 5) Change S25 and S26 to R8, R9, R10, R11	11 JUNE 2024	Jurgen Schroder


PNEV7220BP1 (SINGLE HOST) IMX8 INTERFACE

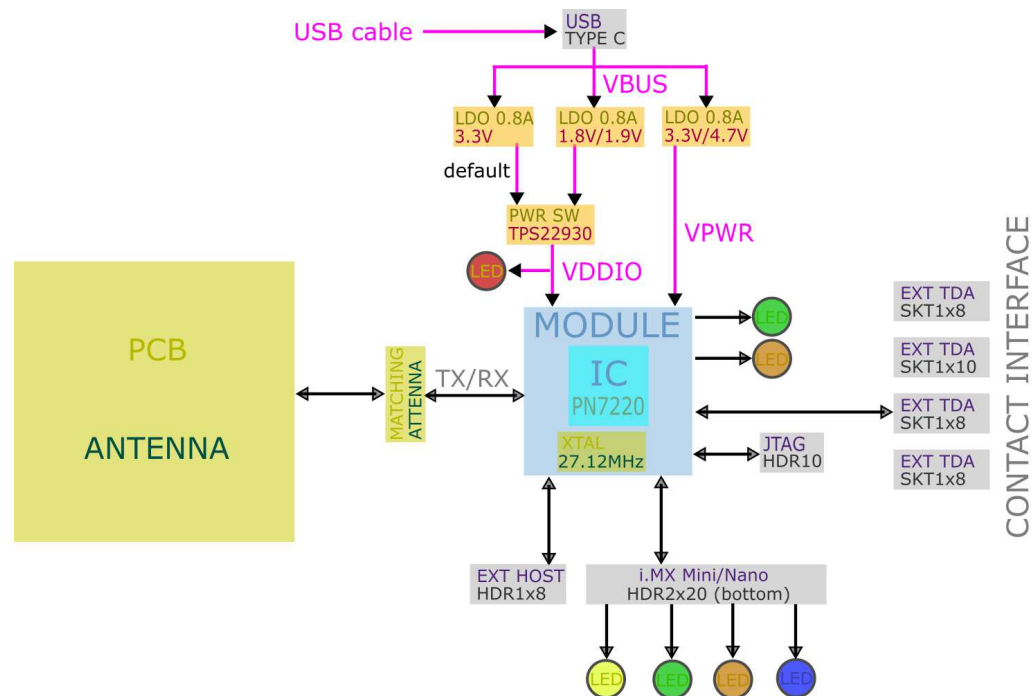
1. Interrupted lines coded with the same letter or letter combinations are electrically connected.
2. Device type number is for reference only. The number varies with the manufacturer.
3. Special signal usage:
_B Denotes - Active-Low Signal
<> or [] Denotes - Vectored Signals
4. Interpret diagram in accordance with American National Standards Institute specifications, current revision, with the exception of logic block symbology.

REF DES	JUMPER(DEFAULT)	PAGE NAME
J2,J4,J5	I-2	03 POWER
J1,J3,J47	NONE	03 POWER

REF DES	ASSY OPT	PAGE NAME
C5,C11,C24,C31,R7,R26	DNP	03 POWER
C91,D12,J27,J28,R56,R60,R64, R67,R68,R71,R215,R216	DNP	04 NFCC Interface
C92,C93,J29,J30,J31,J32,J33, R75,R81	DNP	05 NFC Antenna

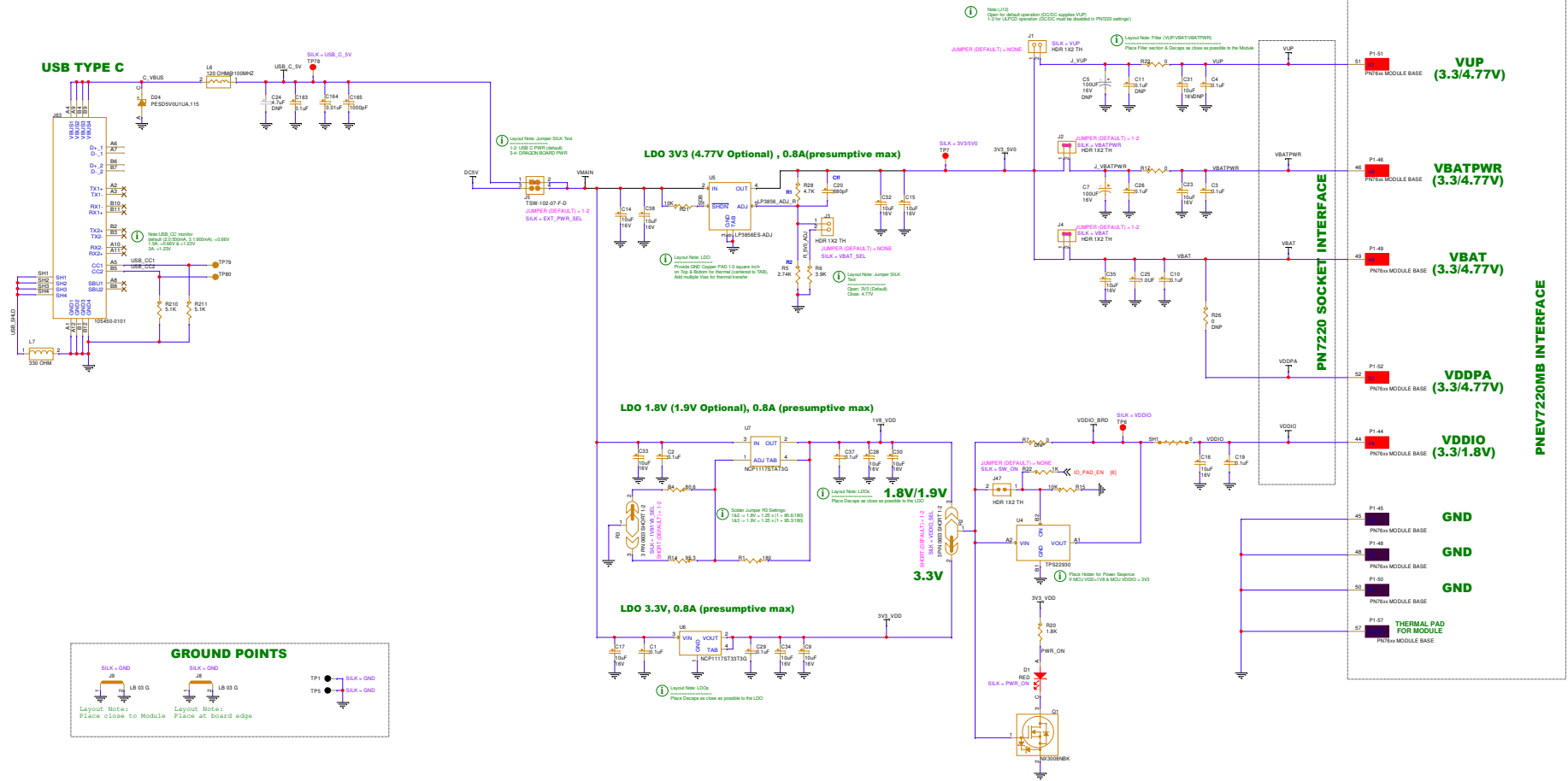
REF DES	SHORT(DEFAULT)	PAGE NAME
R2,R3	I-2	03 POWER
R10,R11	I-2	04 NFCC Interface
S3,SJ4	CLOSE	04 NFCC Interface
SJ11	OPEN	04 NFCC Interface
SJ7,SJ8,SJ9,SJ10	CLOSE	06 IMX8

		Smart Transactions & Identity (STI) Group High Tech Campus 60 5500 AA Eindhoven, The Netherlands	
<small>This document contains information proprietary to NXP and shall not be used for engineering design, development or manufacture in whole or in part without the express written permission of NXP Semiconductors.</small>			
© NXP SEMICONDUCTORS		Classification - Company Internal/Proprietary	
Designer: Jan Oost	Drawing Title: PNEV7220BP1		
Drawn by: Jan Oost	Page No.:	Title	
Approved: Jurgen Schroder	Size: D	Document Number: SCH-89129 PDF: SPV-89129	Rev: C
Date: Tuesday, June 11, 2024	Sheet: 1	of 6	

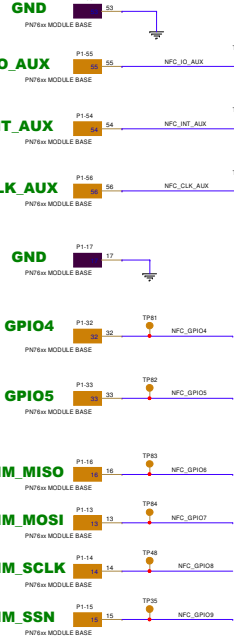


NXP Devices Power Devices Interface Circuits Connectors Hardware

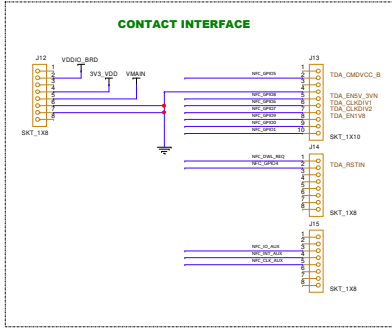
POWER SECTION



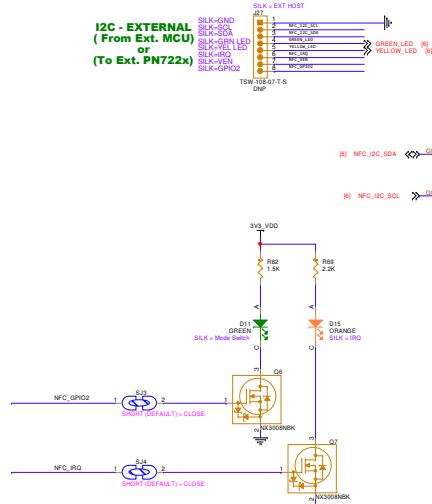
PNEV7220MB INTERFACE



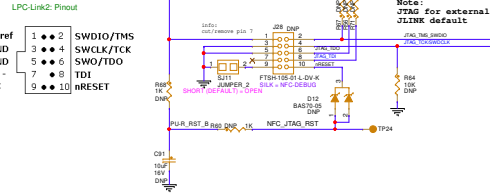
CONTACT INTERFACE



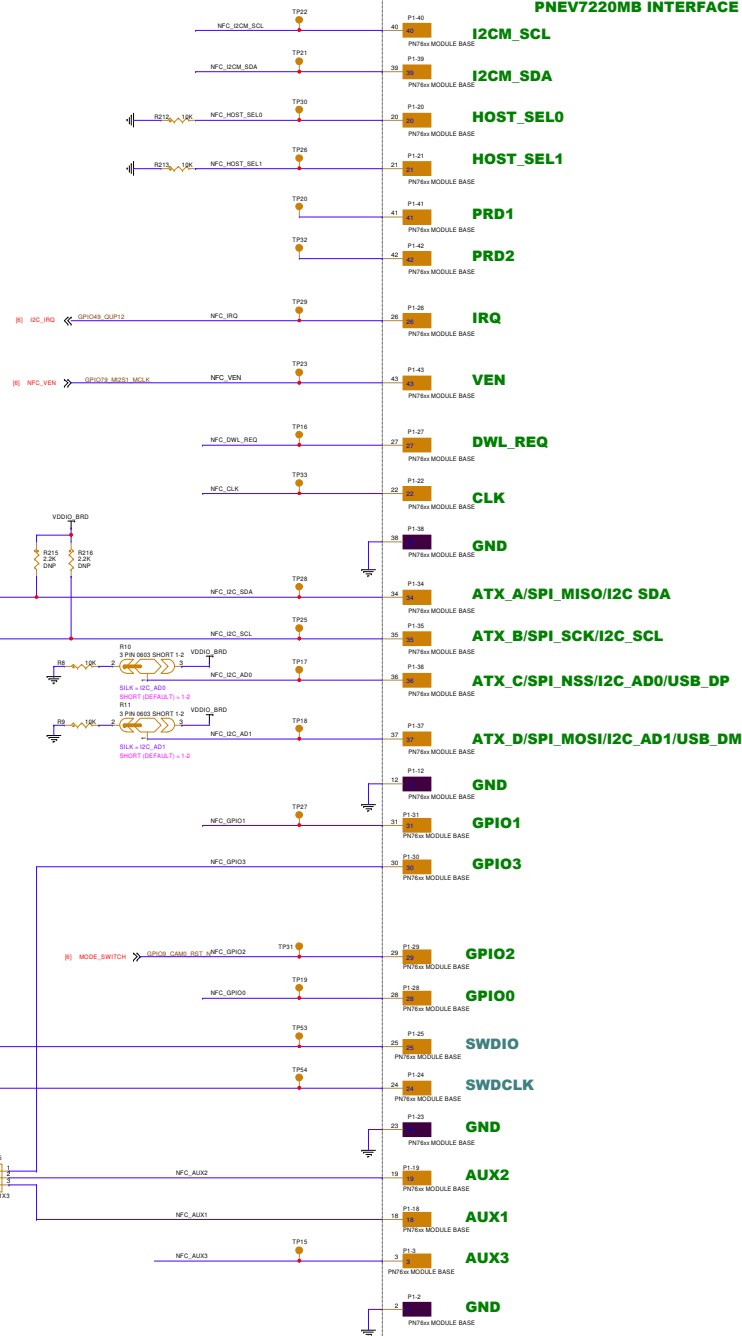
I2C - EXTERNAL
(From Ext. MCU)
or
(To Ext. PN722x)



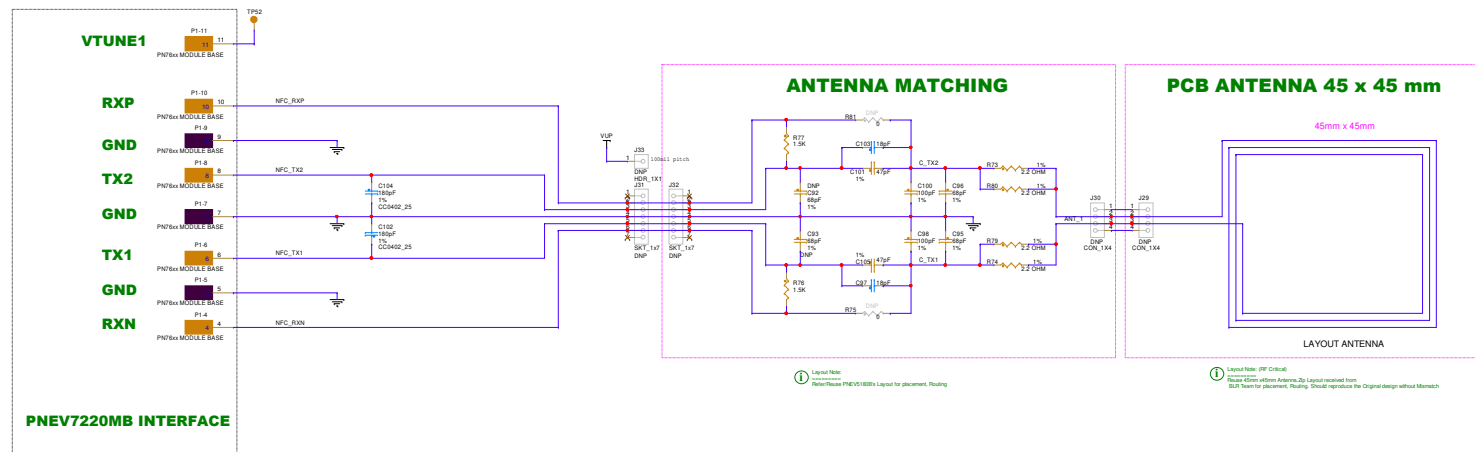
SWD NFCC



PNEV7220MB INTERFACE



NFC ANTENNA INTERFACE



[illegible]